

Exposed Pre-Finished Interior Lining Installation Guide

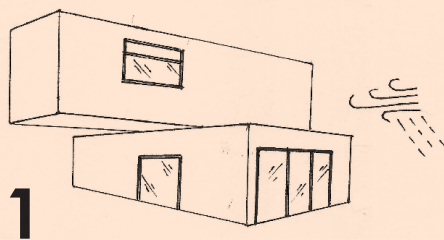
TOOLS

- Safety Glasses
- Ear muffs
- Dusk Mask
- Tape measure
- Skill saw
- Drill
- Screws

Disclaimer:

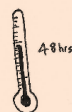
This document must be read in conjunction with:

- Product Technical Statement
- Specification
- Care & Maintenance Guide
- Compliance Summary
- Alternative solution

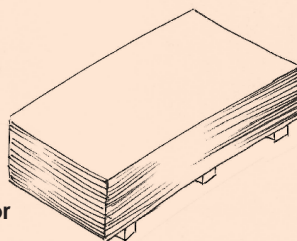


1
Make sure the building is weather tight before installing

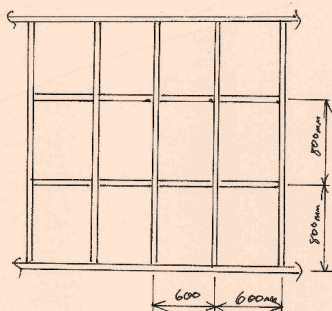
2



Let the boards rest for 48hrs prior to installation

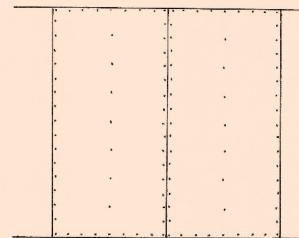


3



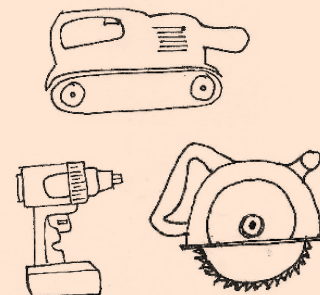
Check framing spacing - 600mm centers for Studs, top and bottom nogs to fix ends.

4



Sheet layout - All edges must be supported - Sheets to be installed vertically

5

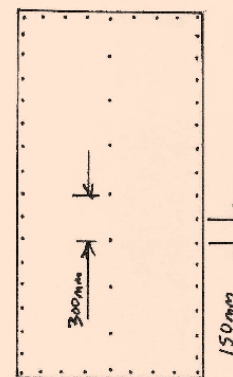


Cutting requires mechanical tools. We recommend using a fine tooth carbide tip saw and clean up with orbital or belt sander.

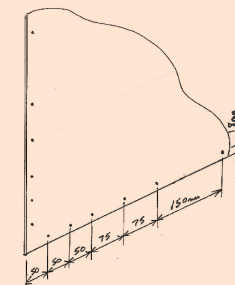
6

Fixing for non-braced walls:

- 40mm panel pins or 8g screws @ 150mm centres plus adhesive daubs @ 300mm on framing down the centre



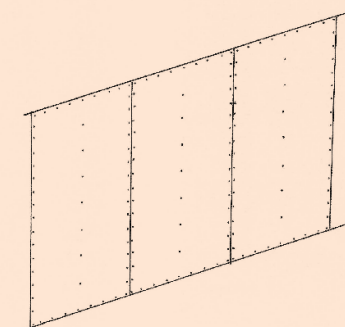
7



Fixing for Braced walls:

- 8g x 40mm screws as per GIB® GS1-N fastening pattern.

8



Finishing & Surface Coatings

- No finishing required.

