



Multi-use Panel Product Overview

Why saveBOARD Multi-use Panel?

- ✓ **SAVE** money. Competitively priced panel + end of life solution + recycling of soft plastics
- ✓ **SAVE** unnecessary construction waste; we'll take your soft plastics and make in to new boards
- ✓ **SAVE** on disposal cost, we take it back at end of life to be made into new products
- ✓ **SAVE** the environment by using a sustainable upcycled building material
- ✓ **SAVE** climate change by using low carbon materials in construction

Suitable for multiple uses in construction and building; formwork, hoardings, protection, signage and other utility applications.

About saveBOARD

saveBOARD is focused on building a circular economy by turning composite packaging waste, back into products that re-enter the local supply chain eliminating future waste.

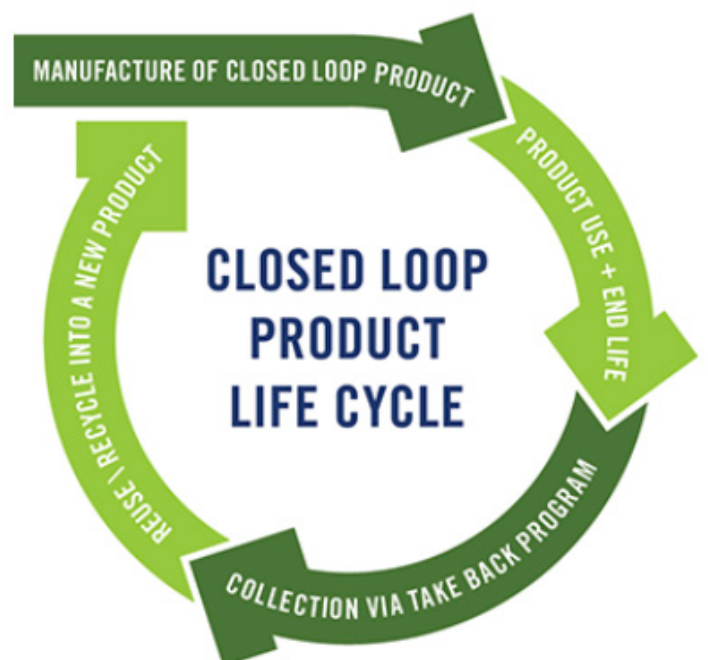
Instead of going to landfill, the saveBOARD waste can be returned to our facility to be shredded and reused in our boards providing a ZERO waste solution.

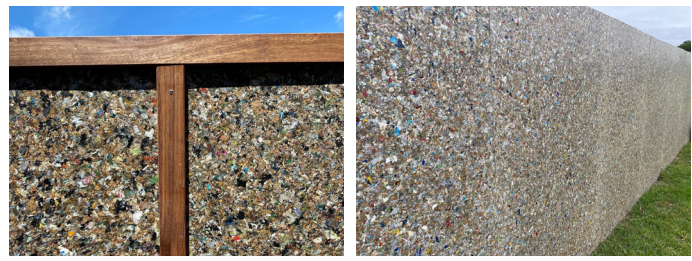
Closed Loop Solution

Our core business is to provide a Closed Loop solution for composite packaging (such as milk cartons, ingredients bags, coffee cups and soft plastics) by turning them into products that are commonly used in the building industry.

Product Stewardship

saveBOARD will also provide a product stewardship program for our own products rather than create another waste problem. During construction the off cuts and waste saveBOARD products can be separated at source into a dedicated FlexiBin or skip bin.





Multi-use Panel Product Specification

1.0 GENERAL NOTES

1.1 SAVE BOARD EXPLAINED

saveBOARD Multi-use is a unique engineered composite panel made from 100% upcycled materials. The core of the product is made from shredded and compressed composite packaging, woodfibre and plastics, giving the user a sustainable and superior performing product.

Finished with an external moisture resistant facing layer, saveBOARD is a reusable construction board suitable for medium term use in applications such as formwork, hordings, protection, signage etc...

1.2 GENERAL

saveBOARD products are manufactured in New Zealand using locally sourced packaging waste and transforming them into healthy, affordable, high performance building materials that make a circular economy an everyday reality.

www.saveboard.nz

2.0 PRODUCT SIZES

2.1 SAVE BOARD MULTI-USE

saveBOARD Multi-use is a unique engineered composite panel made from 100% upcycled materials.

Panel sizes are as follows:

- 2400 mm x 1200 mm x 6 mm
- 2400 mm x 1200 mm x 12 mm
- 2700 mm x 1200 mm x 6 mm
- 2700 mm x 1200 mm x 12 mm
- 3000 mm x 1200 mm x 6 mm
- 3000 mm x 1200 mm x 12 mm

2.2 SAVE BOARD MULTI-USE PROPERTIES

Multi-use Panel Properties	12mm
Width	1200mm
Length	2.4 to 3.0m
Weight (kg/m ²)	9
Volatile Organic Compounds	None

3. EXECUTION

3.1 INSTALLATION

Sawing, drilling and shaping:

- saveBOARD may be cut with any commercial or common woodworking tools. Keep blades sharp for best results and always wear safety goggles and other forms of personal protective equipment.
- Use the same tools and equipment you would normally use to cut plywood, chipboard, MDF.
- Paint to seal exposed edges and back paper face.
- Framing needs to support free edge of board around circumference.

4. HEALTH & SAFETY

4.1 COMPOSITION OF BOARD

The core of the product is made from shredded and compressed composite packaging, woodfibre and soft plastics, giving the user a sustainable and superior performing product.

It contains ZERO glues, chemicals, VOC emissions and other products commonly found in other board products.

4.2 OTHER PRECAUTIONS

Like with the majority of other wood based products, saveBOARD Multi-use is not resistant to fire. Please keep away from direct heat or fire.

5. ZERO WASTE TO LANDFILL

5.1 CLOSED LOOP SOLUTION

saveBOARD will take the used product back and make into new board products. It doesn't matter if its broken, cut into small pieces, crushed, as long as its not contaminated.

Our only condition is that all materials not part of the original board product be removed prior to recycling. That means concrete, screws, nails and other materials need to be removed.

One of our recycling partners will come and collect the end of life product and re-shred back into new products providing a CLOSED LOOP solution.