



# Case Study

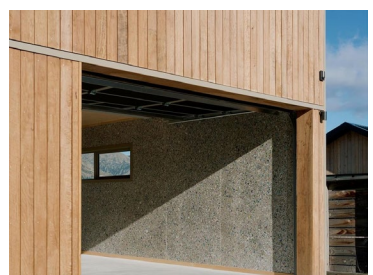
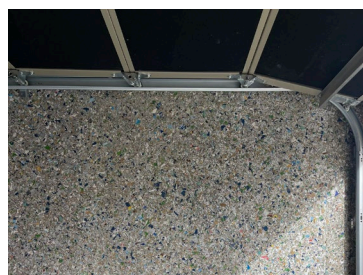
## Tiu House

### Project Overview

Designed as the first stage in a two-stage family home in Lake Hāwea, the Tiu Studio is more than just a garage and residential studio. It is a challenge to the architectural convention of the area and a shining example of efficient use of space, high performance architecture and material experimentation.

Conceived as part of a whole, but more than adequate as a stand-alone home, the Tiu Studio is a glimpse into the future of residential architecture in New Zealand.

**Architect:** [Arête Architects](#)  
**Location:** Lake Hāwea, New Zealand  
**Completed:** October 2023



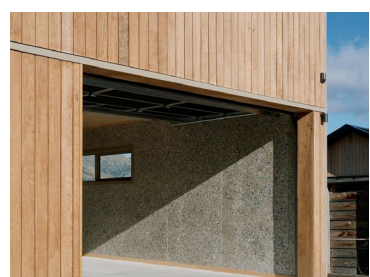
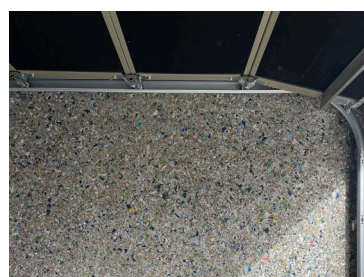
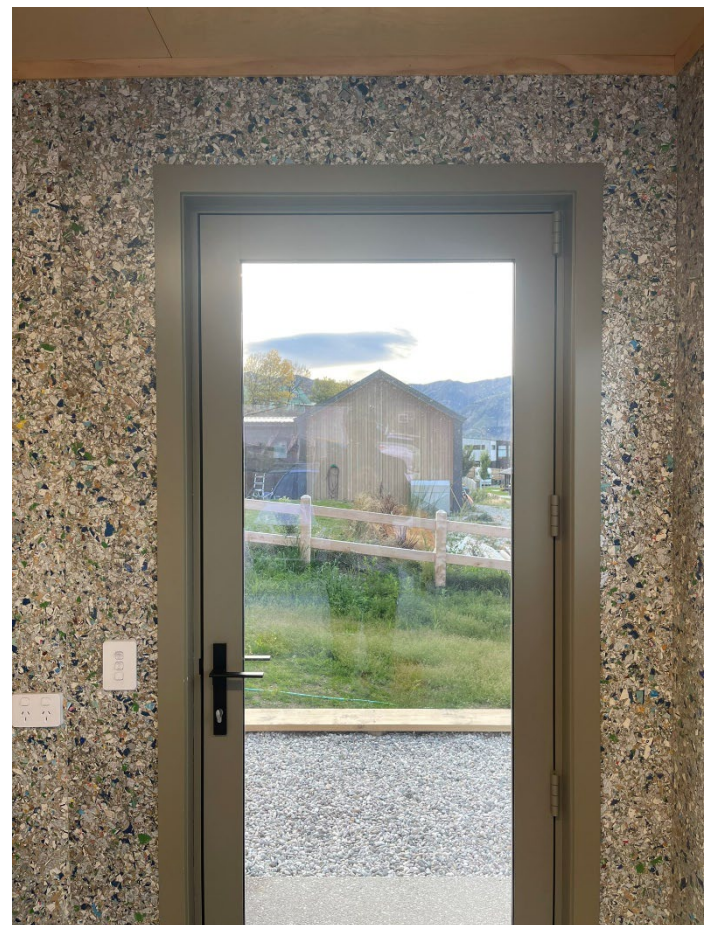
saveBOARD Products Specified: [Exposed Internal Lining](#) - Waitoa

### Why saveBOARD was specified

Sam Brown, Director of Arête Architects, says, "saveBOARD Exposed was specified as the garage lining for several key reasons. Firstly, we wanted to experiment with a new product. It was difficult to convince clients that they should put, what amounts to rubbish, on their walls so we decided to do it ourselves!"

"The results speak for themselves, the intriguing, detailed and beautiful tonal finish is unlike anything available in the market. The other key reason saveBOARD was specified was for its sustainability factor".

saveBOARD product is well aligned with the Arête Architects philosophy of choosing products that are made from recycled materials, and products that can be recycled at end of life. These considerations are prevalent for Arête when specifying products.



## Performance & Functionality

The high impact resistance and durability of the Exposed lining also played a part in the decision making. "As a garage lining, it was likely to become littered with hangers, fixings holes and susceptible to damage. The detailed, textured nature of the product meant that it would not age like standard linings would."

"saveBOARD also has the added bonus of being suitable as a bracing element, which was employed here."

Sam adds that "having both practical and aesthetic qualities make this a suitable material for many internal lining applications."

## Installation

A butt joint was specified for this project, and they were pleased with the results, the comment being, "because of the fibrous nature of the edge the joints tend to blend in together. You are less inclined to stress about panel joints or spend large amounts of time providing clean, detailed negative joints like you would with other sheet products."

## Time and Cost Savings

Arête Architects found the install time and cost to be significantly less than a traditional material such as a plastered and painted lining. "The install was quick and it was easy to cut and trim difficult line areas."

The cost saving of a reduced install time was a "critical consideration given the ever-increasing labour rates experienced by the construction market".

## Media

[Read more](#) about the awesome Tiu House project.

saveBOARD thanks Sam Brown and the amazing team at Arête Architects for specifying Exposed internal lining and for their support in sharing the experience with us all. Much appreciated

