



Case Study

Woolworths Australia



Project Overview

Woolworths Australia is trialling saveBOARD's low carbon building material products made from previously unrecyclable waste liquid paper board milk and juice cartons and soft plastics in their Blacktown, East Gardens, Kellyville West, Chatswood, Randwick, St Mary's, Bowral & Mt Roskill stores. These are being used in heavy impact staff areas and offices (walls and ceiling tiles), as well as in consumer facing sections around trolley collection and self-serve checkouts.

Client: Woolworths Group Australia

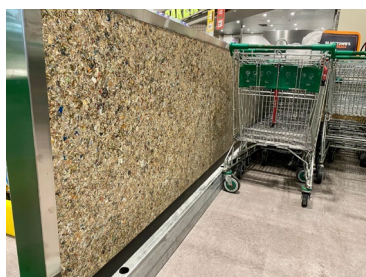
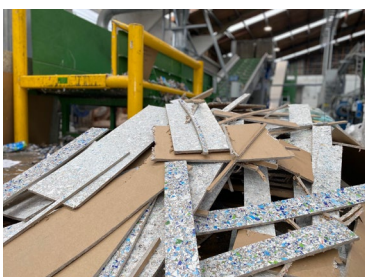
Project Address: Blacktown, East Gardens, Kellyville West, Chatswood, Randwick, St Mary's, Bowral & Mt Roskill stores

saveBOARD Products Specified:

[Exposed Internal Lining](#) | [Paperfaced Internal Linings](#) | [Multi-use Panels](#)

Why Woolworths chose saveBOARD

In FY22 Woolworths Group established and operationalised its 2025 Sustainability Programme – a significant transformational programme across the Group – bringing together teams to collectively drive short and long-term action on its goals across people, planet and product.



Woolworths' business accelerators help drive positive change towards the company's 2025 plan through strategic partnerships and innovations that deliver mutually beneficial outcomes. The W360 accelerator aims to deliver market-leading solutions and innovations focused on energy, waste, water and packaging.

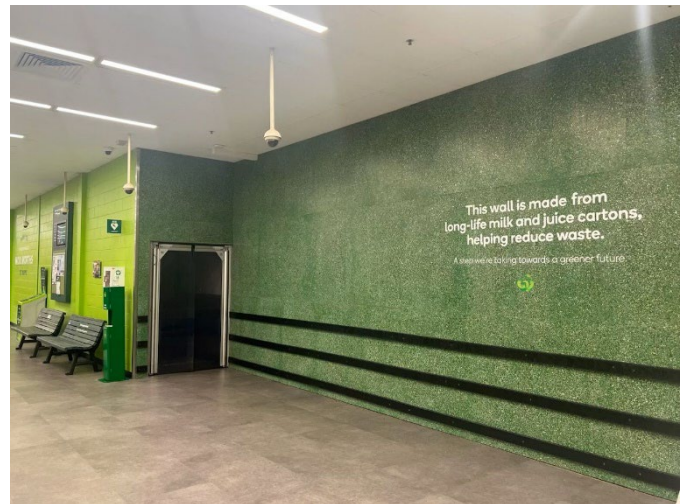


Through its W360 accelerator Woolworths has partnered with saveBOARD to convert liquid paper board and plastic waste collected in stores into saveBOARD building materials that are being trialled in stores. Subject to trial success, Woolworths will roll out saveBOARD as an integral part of its new store builds and annual refurbishment programme.

save the Environment

Soft plastics are key for maintaining product integrity. In Australia, soft plastics recycling solutions are constrained by limited access to facilities that can handle the mixed polymer plastics collected via post-consumer avenues.

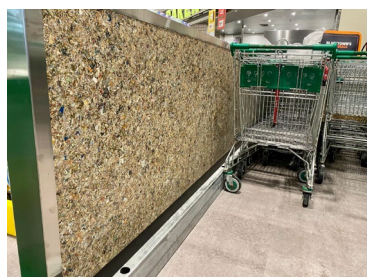
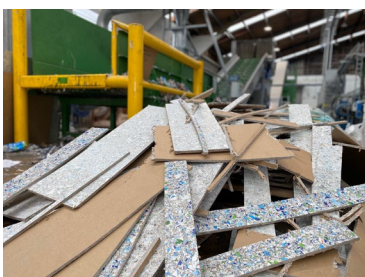
In Australia, REDcycle collected and recycled customer-returned soft plastics for several years. Woolworths Supermarkets suspended the REDcycle programme in November 2022 after it was revealed that REDcycle had been stockpiling collected soft plastics potentially due to insufficient downstream processing capacity.



saveBOARD has worked with Woolworths to utilise some of the RedCycle soft plastics collected in stores. saveBOARD can use up to 600 megatonnes of recyclable material per year at full capacity.

Performance & Functionality

Sourcing waste packaging from ANZ food manufacturers and via the various State Container Deposit Schemes (CDS), saveBOARD is producing products using post-consumer materials that Woolworths can use to replace wood and other virgin building materials.



Circular Economy Solution

"Collaboration with suppliers, industry and government is critical to delivering on goals. Last year, we formed our Woolworths Supermarkets Trade Partner Sustainability Council for Packaging and Recycling which, in F23, met quarterly, providing helpful insights and sharing good practices to inspire change. Our Woolworths Group Packaging Preferred Materials List and Format Guidelines support all suppliers with their packaging plans and helps drive reductions in problematic packaging.



"saveBOARD is a true example of our support for the circular economy. Consumers can buy previously non-recyclable liquid paper board products from our shelves, return them to the CDS in their state and see them repurposed and in use again and again at our stores. Even at its end of life, saveBOARD is then recycled back again into even more saveBOARD."

About saveBOARD

saveBOARD is focused on building a circular economy by turning composite packaging waste back into products. We have two plants; one in Hamilton New Zealand and one in Western Sydney, Australia.

The core of the product is made from 100% recycled shredded and compressed composite packaging and soft plastics, giving the user a sustainable and high performance product. saveBOARD products can be specified with timber or steel framing.

Finished with either a recycled facing paper (Paperfaced), fibreglass face (betterBRACE) or transparent top surface (Exposed, Ceiling Tiles, Multi-use). All products have a recycled paper facing on the bottom surface. saveBOARD products are alternatives to plywood, OSB or plasterboard.

Declare

Declare is a database of non-toxic, sustainably sourced building products that meet the stringent requirements of the International Living Future Institute's Living Building Challenge.

Considered the most advanced sustainability certification in the built environment, Declare is like a nutritional label for building products, offering specifiers, contractors and building users insight into the ingredients used in the manufacture of building products. Click on the following link to see the saveBOARD current Declare label <https://declare.living-future.org/products/saveboard>

