



Commercial example (USA version) saveBOARD Roofing Substrate Tesla Gigafactory, Sparks Nevada, USA.

Roofing Cover Board



Technical Specification

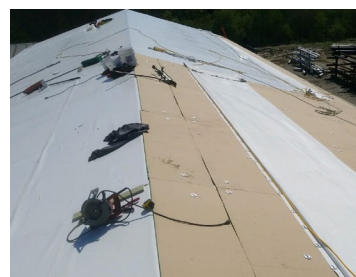
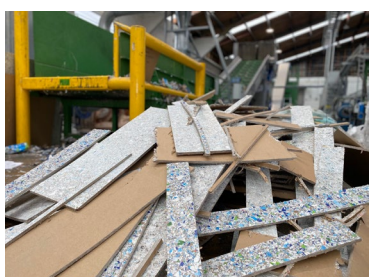
Overview

saveBOARD Roofing Substrate is an engineered roof cover board, made from 99% recycled composite packaging waste with a fibreglass facing that is a sustainable alternative to traditional building materials. No glues, resin or additives are used in our process to create a product that is rated for extreme wind lift, fire resistant, superior compressive strength and is moisture and mould resistant.

Why use saveBOARD Roofing Substrate

saveBOARD Roofing Substrate is fit for purpose with unmatched performance and has been used on some of the worlds most recognisable buildings. Every saveBOARD product used, saves up to 35kgs of packaging waste going to landfill. We also offer our clients the opportunity to make their project circular, by recycling all offcuts and end of life boards into new saveBOARD products along with other suitable soft plastic materials.

saveBOARD Roofing Substrate has a Declare label, meeting the stringent international standards of Living Building Challenge. See <https://declare.living-future.org/products/saveboard>



Physical Properties

Thickness	10mm	12mm
Width, Standard	1200mm (1220mm special)	1200mm (1220mm special)
Length, Standard	2400mm (Up to 3000mm special)	2400mm (Up to 3000mm special)
Pieces Per Pallet	35	30
Weight, Nominal kg/m ³	850	850
Weight, Nominal kg/m ²	8.5	10.3
Compressive Strength ASTM D2394	3990 psi	
Fire- Resistance UL 790 – ASTM E108	Class A	
Fire Group Number – AS3837	3	
Flute Spanability ASTM E661		17"
Mould Resistance – ASTM D3273	10	
VOC Emissions - ASTM D5116	<0.003 mg/m ² /hr	
Formaldehyde Emissions - ASTM D5116	<0.013 mg/m ² /hr	
Permeability – ASTM E96	12.5	
Fastener Pull-Resistance	525 lbf	
Wind Uplift Resistance – FM 4471	FM 1-90	
Water Absorption (Immersion), % Max – ASTM C473	3.9	
Water Absorption (Surface), % Max – ASTM C473	2.8	

Customisation

saveBOARD is a small manufacturing business, which makes our business flexible enough to customise our products to meet specific project requirements. If the project is of sufficient size, then the following customisations are achievable including:

- Change in thickness (6mm to 24mm);
- Density of the finished products (700kg/m³ to 1,000kg/m³);
- Change in dimensions (up to 1220mm wide, and up to 3000mm long).

About saveBOARD

saveBOARD is focused on building a circular economy by turning composite packaging waste back into products that re-enter the local supply chain eliminating future waste.

We currently have two plants;

- 30 Sunshine Ave, Te Rapa, Hamilton, New Zealand
- 11-15 Production Ave, Warragamba, NSW 2752, Australia.

Our goal is to divert around 4,000 tonnes of waste per plant per year from landfill.

