

# Paperfaced Interior Lining Installation Guide

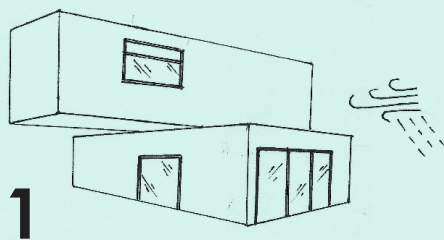
## TOOLS

- Safety Glasses
- Ear muffs
- Dusk Mask
- Tape measure
- Skill saw
- Drill
- Screws

## Disclaimer:

This document must be read in conjunction with:

- Product Technical Statement
- Specification
- Care & Maintenance Guide
- Compliance Summary
- Alternative solution

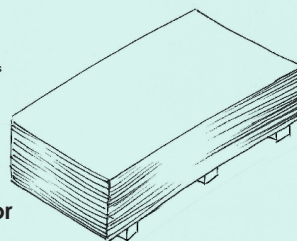


**1**  
Make sure the building is weather tight before installing

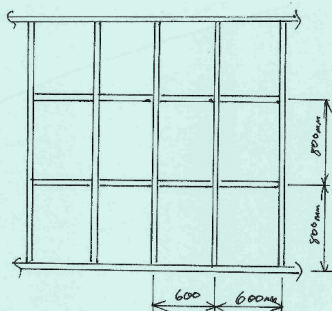
**2**



Let the boards rest for 48hrs prior to installation

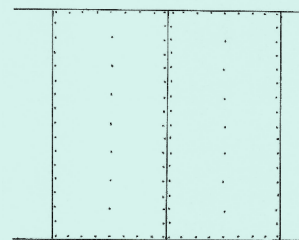


**3**



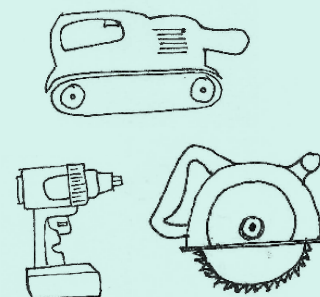
Check framing spacing - 600mm centers for Studs, top and bottom nogs to fix ends.

**4**



Sheet layout - All edges must be supported - Sheets to be installed vertically. If installed horizontally all free edges must be back blocked

**5**

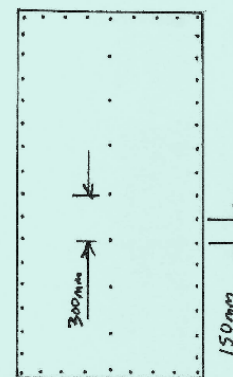


Cutting requires mechanical tools. We recommend using a fine tooth carbide tip saw and clean up with orbital or belt sander.

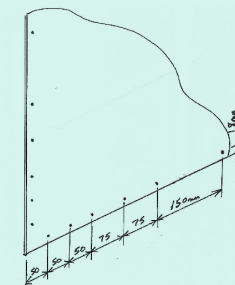
**6**

Fixing for non-braced walls:

- 40mm panel pins or 8g screws @ 150mm centres plus adhesive daubs @ 300mm on framing down the centre



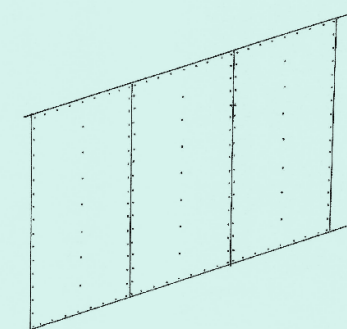
**7**



Fixing for Braced walls:

- 8g x 40mm screws as per GIB® GS1-N fastening pattern.

**8**



Finishing & Surface Coatings

- Plaster coat joints & fixings; undercoat and prime surface. Paint surface with appropriate membrane or finishing paint for application.

